



2015 ANNUAL REPORT







LEADERSHIP FIJI

OUR VISION

To develop and enhance the quality of future leaders of Fiji

OUR MISSION

“To develop and enhance the quality of future leaders of Fiji through skills development and building relationships characterized by respect, trust and understanding amongst individual leaders representing diverse elements which make up the Fiji community.”

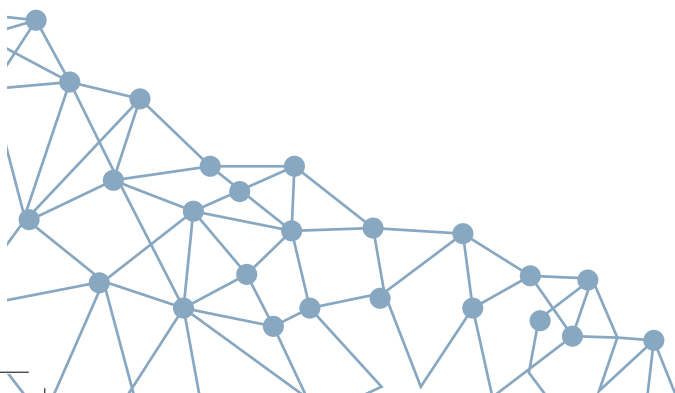
This Mission will be accomplished by:

Involving emerging leaders in a program which broadens their understanding of the many issues affecting the community.
Facilitating dialogue amongst emerging leaders with varied background and interests who can influence public and private institutions.

Providing opportunities for communication between emerging and established leaders.

Encouraging emerging leaders to make a greater commitment to the development of their community.

Providing a forum for networking, personal development and exchange of ideas.







CONTENTS

Page

| | |
|--|----|
| Brief on Leadership Fiji | 6 |
| Chairperson's Address 2015 Graduation | 8 |
| Leadership Fiji Management Board | 9 |
| 2015 Program Schedule | 10 |
| 2015 Program Overview | 11 |
| 2015 Participants | 18 |
| Alumni Profiles & Projects 2002 – 2015 | 19 |
| Acknowledgements | 52 |
| 2015 Financial Report | 1 |

BRIEF ON LEADERSHIP FIJI

Leadership Fiji is an independent, non-partisan, non-aligned entity, which depends on support drawn from the corporate, public and community sectors which was launched in 2000. While the Leadership Fiji program was inaugurated in 2000, our first program was launched in 2001.

It is modelled on the very successful Australian program, Leadership Victoria, which has been going for 18 years and is aimed at mature leaders in the second or third tier of management who would be expected to be at the top of their vocation in the future years.

The Leadership Fiji is a leadership enhancing experience. It is a program of events and activities taking 19 days in the year from March - November. These events/ activities are designed to enable participants to meet to discuss and debate issues among themselves and with invited speakers who demonstrate leadership skills and characteristics.

The program facilitates a network to facilitate on going communication through engagement between emerging leaders.

The aim of the program is to attract participants from the private sector, as well as Government, Statutory bodies, the Trade Unions, the disciplined forces and NGO's.

2015 PARTICIPANTS



2015 LEADERSHIP FIJI LAUNCH

From the Opening Address by Mr David Aidney Managing Director Williams and Gosling

"The difference between this program and many others is that it is not a one day or one week-wonder, where you get a quick buzz and people come away saying "that was good", where in reality, many of these short programs do not having a lasting impact."

"This program will require your commitment and dedication for the next 9 months or so. It will take you to places you haven't been before and it will introduce you to people who you would have only read about and it will give you the opportunity to ask them some pointed questions. We want to see you all develop into inspirational leaders who have a firm vision and the commitment to help take Fiji Forward."

Mr David Aidney
Managing Director
Williams & Gosling



Upon the completion of the 2015 Leadership Fiji program, 28 participants successfully graduated, making their year-group the largest group ever to have graduated from the program taking the Leadership Fiji Alumni to 327.

OBJECTIVES

THE PROGRAM

- Is firmly committed to the belief that its most valuable resources are the program members themselves.
- Allows a member to explore their own values, philosophies, prejudices and beliefs through opportunities offered by the program.
- Canvasses a variety of issues which focus on the next five years. These are chosen from the recommendation of those running the program as well as those who will participate in the program.
- Gives program members close interaction with Fiji's leaders in fields such as government, business, environment, the welfare sector, unions, agriculture and tourism to name a few.
- Is designed to encourage extended interchange throughout the year and beyond between members of the program.
- Ensures discussion confidentiality by insistence on "Chatham House Rule", i.e. nothing attributable outside the room.

LEADERSHIP FIJI Chairperson's Address 2015 Graduation



Welcome to this the 14th Leadership Fiji graduation ceremony. Tonight we celebrate 28 graduating from the Leadership Fiji 2015 program and entering the Leadership Fiji alumni taking our total number of graduates to 327. But their Leadership Fiji journey doesn't end here. Graduates now have the opportunity to put the skills they have learnt this year into action as they work on a significant community project in line with the national vision they created for themselves (and you will see later in the evening) at the very beginning of their Leadership Fiji Journey .

On successful completion of this project they earn the right to be recognised as "Leadership Fiji fellows". Yesterday the board and sponsors got the opportunity to witness a presentation from LF 2014 and I can report that 18 members of this group passed the test and they will be recognised next year when we open the 2016 program.

Back to LF 2015. We started this year with 30 participants the largest ever group. It was decision forced upon us by the quality of applicants. But I must admit we did have some reservations about handling such a large group (typically groups have been 24 – 26). Much of the learning experience from Leadership Fiji comes from interaction with other participants this is why we place such a heavy emphasis on diversity in the selection process.

LF 2015 must be congratulated for the way in which they have supported each other throughout the year. While the Leadership Fiji experience is shared each participant also follows an individual path as they challenge themselves, their fears their hopes and dreams. I want to thank all of you for being so supportive of each other in this process. As a result despite the size of the group we have one of the highest percent of completion rates this year with 28 out of the original 30 graduating. The two who failed to complete the course did so because they were transferred overseas for work and study.

As I have mentioned we are approaching our 15th year of operation and the Board of Leadership Fiji is very conscious of the need to review and change to stay relevant to current needs. One of the long term goals has been that the program be eventually entirely run by members of the alumni. Currently the board features a majority of alumni members and we look over the next few years to achieve our goal. With this in mind Sharyne Fong LF 2005 has been appointed Executive Director. Some of you may recall Sharyne led one of the most successful year groups who created Friends of Hilton and then raised a massive amount of money for this special cause. We have already experienced the benefit of Sharyne's dynamic and determined leadership and I am excited about the impact she will have on Leadership Fiji.

Unfortunately tonight we are saying farewell to our Executive Officer Melissa Kosta Levaci. Melissa has run the program for the last four years bring her experience as a senior High School teacher to the program. I want to thank her for the commitment she has shown to Leadership Fiji. We won't be losing her skills entirely as we have asked her to become a board member and she has offered to assist with the running of Leadership Fiji activities in the future.

However I am also pleased to announce that taking up the role of Executive Office is another alumni member Tamara Smith LF 2013. Once again we are already familiar with Tamara's leadership skills as she was elected as her year group representative on the Leadership Fiji board.

As I said I am excited about the future of Leadership Fiji and I know the new management team and board will inject into the program a new spirit of dynamism and enthusiasm. Before I introduce our guest speakers let me conclude by acknowledging our sponsor. Beginning with our platinum sponsors the New Zealand High Commission and ANZ. Gold sponsors, British American Tobacco. Communications Fiji Ltd, Quality Print. Silver BSP, BSP life, Williams and Gosling, Digicel Fiji, the Fiji Times, Aliz Pacific. Bronze sponsors Unwired Fiji, and Bondwell Computers. In addition this year we welcomed a new platinum sponsor MWH who have supported the program not only with cash but also assisted by hosting sessions... Thank you Mike Special thanks also to your President Operations Asia Pacific Dr Marshall Davert who spoke both to this year's group and then as key note speaker at this year's Leadership Fiji alumni summit.

William Parkinson
Chairperson – Leadership Fiji



Management Board Members



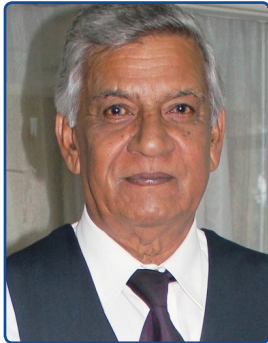
William Parkinson

Board Chair
Managing Director,
Communications Fiji Limited
& PNG FM Limited



Sufi Dean

Director
Former Executive Officer



Joel Sahai

Director



Avaneesh Raman

LF2012
Director



Iaitia Tuinamoala

LF2009
Director



Sharyne Fong

LF2005
Executive Director
Head of Banking
Transformation,
Bank South Pacific



Tamara Smith

LF2013
Executive Officer



Praveen Maharaj

LF2008
President,
Leadership Fiji Alumni



Peter Rigamoto

LF2015
Representative



Melissa Koster-Levaci

Board Member



Leadership Fiji 2015 Vision

In 2035, Fiji will be a healthy, skilled and innovative nation. Our people will uphold the rule of law and respect universal human rights. We will protect our environment and meet the challenges of climate change. Fiji will be a prosperous nation celebrating her unique diversity”



2015 Program Outline

| | | | |
|-------|----------|-------|--|
| March | Fri | 6 | 2015 Launch and Induction of 2013 Fellows 6pm |
| March | Sat/Sun | 7-8 | OPENING RETREAT |
| March | Wed | 25 | An Overview of Fiji's History 8am |
| April | Wed | 8 | Human Rights & the Media 8am |
| April | Wed | 22 | Law & Order and Government Machinery 8am |
| May | Fri/Sat | 8-9 | Tourism Industry - WEST |
| May | Wed | 20 | Environment 8am |
| June | Wed | 3 | Education 8am |
| June | Thur/Fri | 18-19 | MID YEAR RETREAT |
| July | Wed | 8 | Poverty & Social Welfare 8am |
| July | Wed | 22 | Fiji's Economy 8am |
| Aug | Fri/Sat | 7-8 | Alternative Agriculture - WEST |
| Aug | Wed | 26 | Health 8am |
| Sept | Tues | 8 | Etiquette Dinner 6.30pm |
| Sept | Wed | 9 | Participants Choice 8am |
| Sept | Thur/Fri | 24-25 | Sugar & Mining Industries - WEST |
| Oct | Wed | 7 | Site Visits 8am |
| Oct | Wed | 21 | Fiji and the World 8am |
| Oct | Fri/Sat | 30-31 | CLOSING RETREAT |
| Nov | Thurs | 5 | 2015 Vision & 2014 Project Presentation 3pm |
| Nov | Fri | 6 | Graduation 7pm |



2015 PROGRAM OVERVIEW

FELLOWS INDUCTION 2013 & 2015 PROGRAM LAUNCH

“We want to see you all develop into inspirational leaders who have a firm vision and commitment to take Fiji forward.”

The comment was by Dave Aidney, the managing director of Williams and Gosling, who was the guest speaker at the launch of the Leadership Fiji 2015 program. Mr Aidney informed the aspiring leaders present at the launch on Friday at the Southern Cross Hotel that in order to develop this, one must focus on the 360 management style.

“Fiji has plenty of managers, plenty people who think they are managers but often a lot of them are only 180 managers; they enjoy doing what they do and they neglect the other half of what they should be doing,” Mr Aidney said.

He said what he would like to see develop was the “can do” attitude.

“Those with great attitude can move mountains and delight customers.”

Mr Aidney said the leadership alumni was one of the most powerful groups Fiji had to offer.

He said a true leader needed to be one that would lead from the front with consistency and professionalism and needed to earn the respect of their fellow workers.

“I personally would like to see a lot more emphasis on trade skills to help carry us through so we don’t end up having to bring in expert workers.”

Article taken off the Fiji Times, Monday, March 09, 2015



2013 Fellows of the Leadership Fiji Program during the launch of the program at the Southern Cross Hotel in Suva. Source: The Fiji Times

As part of their Fellows community work, the 2013 graduates completed a number of activities including a Clothes & Book Drive for Nadroga/Navosa Provincial Office (Cyclone Tomas affected areas) and Homes of Hope, Wailoku, donated supplies to Bau District School and monetary contribution to the Bau netball team, mangrove-planting along Nasese, Suva, donated 11 computers to Lautoka Primary School and Shastri Memorial School, Ba and also donated supplies to the Little Ones Mobile Kindergarten at Savutalele Settlement, Tacirua Heights.

OPENING RETREAT

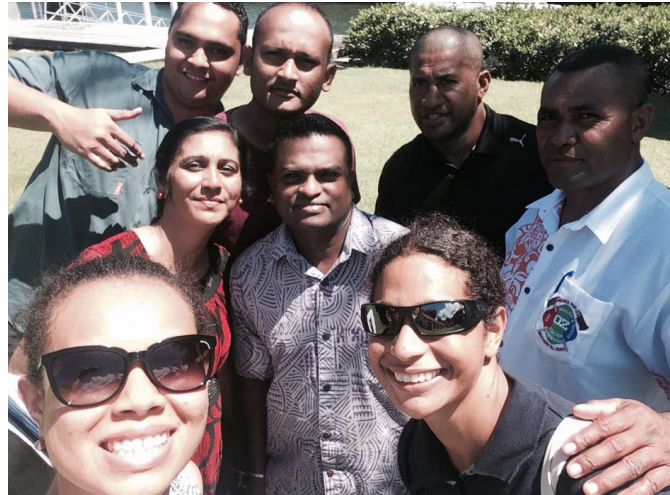
The opening retreat served as a reflective weekend based on the idea of 'understanding ones' self'. Participants were introduced to the 'Littauer Personality Profile' test, Stress test, Interpersonal style inventory test with thinking and working styles exercises. The tests allowed an understanding of personal and professional reactions to certain situations based on results from ratings. There were discussions on how to deal with various personality types in ones' organization. The exercises allowed critical thoughts on dealing with various personality types in conflict situations.

The retreat focused on the following basic premises of Leadership:

- Leadership and Attitude to success
- Being a good leader
- Dealing with change and Conflict resolutions
- Credibility of leaders

After half a day of brainstorming, participants also agreed on their Vision for Fiji:

"In 2035, Fiji will be a healthy, skilled and innovative nation. Our people will uphold the rule of law and respect universal human rights. We will protect our environment and meet the challenges of climate change. Fiji will be a prosperous nation celebrating her unique diversity"



AN OVERVIEW OF FIJI'S HISTORY

This session looked at Pre and Post independent Fiji, with Sudesh Mishra providing a wealth of information on the society's evolving perception and acceptance of racial description and racial status during the pre and post-independence era in Fiji. This was followed by Mr Laisenia Qarase who took the group through his experience in leading the Government through to the Takeover (Caretaker Government), and how he had to face the consequences of different convictions of leading the nation. An interesting session followed, with Prof Jon Fraenklen who covered an analysis of 'Provincial, Urban and Ethnic Loyalties in Fiji's 2015 Election' and Government decisions that bought loyalties from the society. This particularly applied to the rural communities that displayed loyalty to the Opposition party. Overall, this session set the scene for the analysis of the range of issues to be discussed over the rest of the year.



HUMAN RIGHTS & MEDIA

A few prominent activists provided their situational analysis of human rights in Fiji and elaborated on current situations and challenges of enjoying human rights in Fiji. This session saw presentations from Fiji Disabled Peoples Association, Drodrolagi Movement, and Fiji Women's Crisis Centre who discussed within the context of their own causes, the fact that all human beings regardless of their differences have equal and inalienable rights. This was followed by presentations on media issues by Ashwin Raj the Chair of Fiji's Media Industry Development Authority along with Vijay Narayan of CFL and Fred Wesley of The Fiji Times who shared their respective analysis of current situations and provided an overview of the challenges in running a media organization.



LAW AND ORDER & GOVERNMENT MACHINERY



We had the privilege of having the issues of Law, Order and Government Machinery broken down to us from the perspectives of 4 different speakers and having our queries addressed in return. Mr. Richard Naidu, Partner Munro Leys, Assistant Police Commissioner Tudravu, Cathy Wong, Physiotherapist, CDM SPG 2015, and Leadership Fiji 2009 Alumni and finally, Chief Justice Gates.

They all touched on the rule of law and the Judiciary, the functions and challenges of the Police Force, and Governance in Sports. The various experiences and responsibilities of the 4 speakers made for a very enlightening and informative session.

POVERTY AND SOCIAL WELFARE

In this session, we were taken through a statistical analysis of poverty by Dr Neelesh Goundar from the Faculty of Business & Economics, USP with comparisons made between Fiji and countries like China, Vietnam, India. Data revealed that since 1979, poverty in Fiji has increased almost 5 fold. Fiji is rated 96 out of 187 countries on the Human Development Index. We were privileged also to have lunch with the Dr Biman Prasad, Shadow Minister for Finance, Planning and Statistics and Chairman of the Fijian Parliamentary Public Accounts Committee who highlighted Fiji's current VAT policies. We also visited Homes of Hope and the Lagilagi Housing project at Jittu Estate, Suva.



EDUCATION

From the Ministry of Education, Mr lowane Tiko's session was titled 'Fiji Education and Government' in which he spoke about the challenges and measures for solutions which included suggestions for restructure and new policies surrounding Technology, Class and infrastructure, Vernacular, Survey and Collection of Data and the Kindergarten Sector. His parting remarks were, 'We should work on improving Education in Fiji so that we can become a healthy society. When the economy and society are more educated, Government money is not used on trying to improve the health of people.' Akhilal Nand Sharma from Sanatan Dharam spoke about Community Initiative in the Education Sector while Dr. Priscilla Puamau of AusAID's Access to Quality Education Program discussed 'Improving Education Opportunities: Access to Quality Education.'



TOURISM



From the varied perspectives of Tourism Fiji to the Fiji Backpackers Association to Fiji Airways, to Freebird Institute and the Westin Resort, 5 speakers in Nadi covered the issues of impacts of political instability and natural disasters on the industry, new marketing strategies, the environment in tourism, tourism education, and the changing nature of range of visitors. The presentations also analyzed Governments targets and the challenges of providing adequate services up to the year 2020.

MID-YEAR RETREAT

Facilitated by Director, Team Tectonics, New Zealand and independent leadership trainer, Greg Caigou, this retreat provided an opportunity to recap on the first half of the year's session, and going forward. We managed to deliberate towards community projects for the next year, post-graduation and also participated in components of professional and personal development. Vital learning aspects of the retreat centered on agreed key-words and discussion topics which included 'fun, fundamentals and food, teamwork, goals, leadership, communication, trust, participation, management.' Mr Caigou also placed emphasis on 'people skills, time management, and continuous self-improvement and self-care'.



'We cannot become who we need to be by remaining who we are and if nothing changes, nothing will change. However, your work and life will not be sustainable if you're always busy and to ensure you do well you must use your head - knowledge, hands - skills and heart - motivation. You must play to your strengths and improve your weaknesses. Your attitude goes with you wherever you go.'

HEALTH

The General Manager Suva Private Hospital, David Qumivutia shared some information about Private Health Care. Initiatives to improve service delivery at SPH include, changing the mind set and culture, review patient/nurse ratio and doctor/patient ratio, feedback mechanism, staff appreciation and retention. Some of the challenges SPH faces include how it is situated within a PIC that is vulnerable to external shocks, limited pool of specialists, emotion charged environment, limited diagnostic capacity, brain drain, training, national health concerns such as NCDs and Cancer. The Permanent Secretary for the Ministry of Health (MOH) shared the Ministry's vision and mission statements. Fiji has 3 divisional hospitals, 16 sub-divisional hospitals, 3 Area hospitals and 2 special hospitals.



FIJI'S ECONOMY & INFRASTRUCTURE

Participants had the opportunity to hear from Fiji's leading experts in Economic Infrastructure and these included, Mr David Baleinacagi, Principal Analyst at Fiji Revenue & Customs Authority who presented on Fiji's State of Economy and the role of FRCA. We also discussed FRCA Reforms, taxes, PAYE as a final tax, continuing self-assessment and commissioner's assessment. Mr Ariff Ali, Deputy Governor, Reserve Bank of Fiji discussed Economic growth, GDP growth outlook, RBF Twin objectives, Fiji government and revenues.



Mr. Rob Cromb, Founder of Kookai, Australia joined us for Lunch & Learn and he spoke at length about 'valuing and giving back'. 'It's important to give back to people responsible for your formative molding and development.' We learnt that Mr Cromb grew up in Fiji, on Vanua Levu but moved to Australia to further his education. Guided by this principle of 'giving back' among others, Mr Cromb set up his textile and /garment manufacturing entrepreneurship in Fiji and has enjoyed a vibrant and steady growth.

2014 Exporter of the Year, Mr. Mark Halabe, Managing Director for Mark One Apparel spoke about 'Doing Business in Fiji'. Mr. Halabe delivered the Private Sector perspective.

ALTERNATIVE AGRICULTURE

It was a particularly rewarding experience to tour long-established local agricultural institutions which included the Vunikoka Farm, Joes Farm, Spices Fiji, The Government Agriculture Research Station, Vuda Piggery and FRIEND Fiji. Valuable business and operation advice handed to us included Mr. Tiko Eastgate's fun remark, 'having a sheep farm is like raising children and hard work. One must utilize resources. One's waste can be your treasure.' He likes collecting old bath tubs, security grills and anything he can utilize as farm equipment and accessory to keep operating cost down. Mr. Eastgate also mentioned the importance of time management in business, 'always RSVP or call when you will be late or cannot make an appointment. There is too much 'Fiji Time' and we need to move away from this.'



ENVIRONMENT



For the environment session, participants were provided with presentations from South Pacific Commission's GIZ program, Department of Environment, International Union for Conservation of Nature, World Wide Fund for Nature, Nature Fiji, and Mareqeti Viti who all discussed the major issues of climate change in the Pacific, global warming, natural disasters and awareness, and institutional responses to these predicaments.

Following the environmental sessions, Virisila Buadromo (LF 2002) former Executive Director of the Fiji Women's

Rights Movement spoke on Project Planning and Funding from an NGO perspective and Rajeshwar Singh, Chief Financial Officer of Bank of the South Pacific (BSP) spoke on seeking Corporate Sponsorship, to assist participants in planning their community projects.

SUGAR & MINING

The much awaited round-the-island trip took participants to the Sugar City. The sugar panel made up of representatives of the Fiji Sugar Corporation, Sugar Cane Growers Fund as well as Timothy Brown, Industrial Commissioner, Sugar Industry Tribunal provided a broad perspective of this complex yet critical industry. With a wealth of industry experience between them, speakers spoke with passion and concern for this once thriving industry. As the session took place at the Ocean Soaps Training Room, LF2014 were also hosted to a Lunch & Learn by Chetan Punja and took a tour of the Ocean Soaps factory before visiting the Koroipita Model Town with Peter Drysdale. The visit to Koroipita was an eye-opener, not only for seeing the realities of poverty



On their way to Tavua, LF2014 visited FRIEND Fiji to see first-hand the initiatives undertaken for those on the outskirts of the Sugar City and in rural communities to help them cope with the effects of the declining sugar industry. On Day 2, LF2014 met with Tulsi Ram, CEO Tavua Town Council before visiting the Vatukoula Gold Mine and the Penang Sugar Mill.

SITE VISITS

Pure Fiji - Pure Fiji was set up in 2000 and exports a wide selection of skin and hair care treatments, and other body and bath products, throughout the Pacific Islands as well as to New Zealand, Australia, the United States, Canada, the United Kingdom, Ireland, the Czech Republic and Korea. Now their complex contains a day spa, Health and Wellness Centre, Yoga, and a Pilates and Fitness studio and not to mention world renowned products.

Lyndhurst Factory is one of the manufacturing arms of KOOKAI a privately owned women's fashion retail company. The company has 34 retail stores in Australia and New Zealand. Based in Kalabu's Tax Free Zone, Lyndhurst boasts a huge open factory with lines of mostly women and men working in sync and sectioned off into various tasks like cutting, sewing, finishes and so forth. Finished garments are very high end fashionable clothing with a price range starting at AUD\$250.



ANZ Pacific Operations Centre was established with the objective of consolidating the operations from ANZ's 12 Pacific sites into a single centre. After the eye opening tour of the Operations, we were all invited to lunch and to attend a plenary discussion of which their first local Managing Director and LF 2002, Mr Ritesh Singh also took part. Discussions focused on the various issues like how technology was affecting things in this day and age, HR issues and a few other very interesting discussions.

PARTICIPANTS CHOICE – SPORTS

Each year, participants vote on one session of their choice and LF 2015 chose Sports. Sports experts and speakers at this session were Albert Miller from Athletics Fiji, Semaima Lagilagi (LF 2014) from the Pacific Volleyball Partnership Program, Ravinesh Kumar of Fiji Football Association, Sale Sorovaki of the Fiji Rugby Union, Joe Rodan and Lorraine Mar of FASANOC and Sitiveni Rokoro, the Senior Sports Officer for the Ministry of Youth & Sports.



Apart from the various learnings taken away from each speaker, we made a collective inference that the Sports Fraternity of Fiji was still very amateur and has a long journey ahead before being a professional entity. In order for Sports to be self-funding or marketable to any sponsor, the journey must be made with certainty and affirmation. Sports administrators or those at the helm are vital in improving sporting standards in the country. While certain sports enjoy ad hoc sponsorship and others on a needs-basis, there is room for improvement. This is achievable via collaborative work, honest and effective management and improvement of regional and world rankings in order to attract the 'big guns' of sponsorship.

GRADUATION

After a year-long intensive personal and professional development program, the Leadership Fiji class of 2015 graduated at a dinner-cocktail event held at the Holiday Inn in Suva.

In a video presentation to everyone present at the event, LF 2015 highlighted their analysis of orange sectors and issues in Fiji and detailed a number of community projects they undertook in the areas of social welfare and education.

28 participants will now join the 320 strong Leadership Fiji Alumni, across Fiji.

In a record for the program, the 2015 group was the first in which 100% of possible graduates made it through to the end. The evening was celebrated by families, friends, sponsors and Alumni alike who witnessed well deserved and emotional accolades. All 28 graduates have committed to continuing their community work into the second year of the program that will see a further graduation process to become Fellows of Leadership Fiji.



The Leadership Fiji experience is aimed at assisting our emerging leaders to cope with demands of the ever-changing world so that Fiji reaches its full potential in the widest sense. The aim of Leadership Fiji is to expose participants to leaders and issues from across our society, providing them with the opportunity to deepen their understanding of Fiji's history, economic and social structure, while providing them an avenue to engage in community work.



2015 PARTICIPANTS

| Participant | Designation | Organisation |
|----------------------|---|--|
| Shivani Raman | Sales Manager | Motibhai |
| Mellony Inia | Senior Personal Banker | ANZ Bank |
| Gina Rawalai | Reservations Manager/Flight Coordinator | Pacific Island Air |
| Unaisi Tagicakibau | Monitoring & Evaluation Coordinator | World Wide Fund for Nature |
| Priscilla Reddy | Administration & Marketing Manager | Pacific Training and Management |
| Veronika Naiwaqa | Executive Secretary | International Labour Organisation |
| Oripa Adicokocoko | Planning & Customer Relations Officer | Mark One Apparel |
| Renee Whippy | Project Coordinator | iTVTi(Subsidiary of Lyndhurst Limited) |
| Annie Kumkee-Chandra | Sales Manager | Williams & Gosling Limited |
| Leilani Kotobalavu | Principal Economic Planning Officer | Ministry of Fisheries & Forests |
| Saleshni Chand | (MF) Director General Office | Practice & Secretarial Services |
| Susan Vocea | Senior Environmental Engineer | MWH Global - Fiji Branch |
| Ronald Prasad | Accounts Supervisor | Motibhai & Company Limited |
| Epeli Vakatawa | Assistant Manager, Business Development | Fiji Television Limited |
| Nitesh Chand | General Manager Corporate | Fiji Television Limited |
| Mosese Bogidrau | Technical Officer | Vatukoula Gold Mine Limited |
| Shaad Ansari | Renewable Energy Technician | Fiji Electricity Authority |
| Peter Rigamoto | Senior Legal Counsel | Digicel |
| Saimone Shaw | Manager Leasing | BSP Life |
| Epeli Roko | Sub Officer National | Fire Authority |
| Feroz Ali | Training Manager | Lyndhurst Limited |
| Dhanjay Deo | News Editor | Communications Fiji Limited |
| Vinesh Chandra | Account Manager | Williams & Gosling Limited |
| Vikash Harikishan | Commercial Relationship Manager | Bank South Pacific |
| Ryan Kennedy | Team Leader Corporate Services | Westpac |
| Noni Veikoso | Senior Security Officer | Reserve Bank of Fiji |
| Francis Ali | Records Administrator | Reserve Bank of Fiji |
| Poasa Vasukicakau | Senior Security Officer | Reserve Bank of Fiji |

ALUMNI PROFILES 2015 – 2002 2015 PARTICIPANTS



SHIVANI RAMAN
Sales Manager
Motibhai



MELLONY INIA
Senior Personal Banker
ANZ Bank



GINA RAWALAI
Reservations Manager/Flight
Coordinator
Pacific Island Air



UNAISI TAGICAKIBAU
Monitoring & Evaluation
Coordinator
World Wide Fund for Nature



PRISCILLA REDDY
Administration & Marketing
Manager Pacific Training and
Management



VERONIKA NAIWAQA
Executive Secretary
International Labour Organisation



ORIPA ADICOKOCOKO
Planning & Customer Relations
Officer
Mark One Apparel



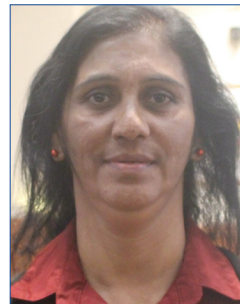
RENEE WHIPPY
Project Coordinator
iTVTi (Subsidiary of Lyndhurst
Limited)



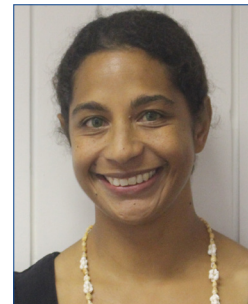
ANNIE KUMKEE-CHANDRA
Sales Manager Williams &
Gosling Limited



LEILANI KOTOBALAVU
Principal Economic Planning
Officer
Ministry of Fisheries & Forests



SALESHNI CHAND
(MF) Director General Office
Practice & Secretarial Services



SUSAN VOCEA
Senior Environmental Engineer
MWH Global - Fiji Branch



RONALD PRASAD
Accounts Supervisor
Motibhai & Company Limited



EPELI VAKATAWA
Assistant Manager,
Business Development
Fiji Television Limited



NITESH CHAND
General Manager Corporate
Fiji Television Limited



MOSESE BOGIDRAU
Technical Officer
Vatukoula Gold Mine Limited



SHAAD ANSARI
Renewable Energy Technician
Fiji Electricity Authority



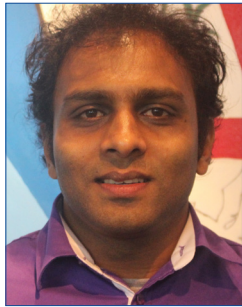
PETER RIGAMOTO
Senior Legal Counsel
Digicel



SAIMONE SHAW
Manager Leasing
BSP Life



EPLI ROKO
Sub Officer National
Fire Authority



FEROZ ALI
Training Manager
Lyndhurst Limited



DHANJAY DEO
News Editor
Communications Fiji Limited



VINESH CHANDRA
Account Manager
Williams & Gosling Limited



VIKASH HARIKISHAN
Commercial Relationship
Manager
Bank South Pacific



RYAN KENNEDY
Team Leader
Corporate Services
Westpac



NONI VEIKOSO
Senior Security Officer
Reserve Bank of Fiji



FRANCIS ALI
Records Administrator
Reserve Bank of Fiji



POASA VASUKICAKAU
Senior Security Officer
Reserve Bank of Fiji

2015 COMMUNITY PROJECTS

Sawani Kindergarten - donation of books, school supplies, toys, shoes

Saint Vincent De Paul - donation of stove and baking supplies and refurbishment of kitchen

Rukuruku district school - building of school play ground

SPCA – donation of curtains





2014 PARTICIPANTS



AJAY BHAN
Sales Manager
Motibhai & Company Ltd



ALLYSON HERITAGE-VAVE
Business Analyst
ANZ Pacific Operations Limited



ALRINA ALI
Business Development
Telecom Fiji Limited Manager



ANARE NAKAUNICINA
Manager Procurement
Services
BSP Life



ANARETA TAWAQA
Training Manager
Bank of South Pacific



ANE TABUYA
Branch Manager
Westpac Banking Corporation



BENJAMIN SIKURI
Manager Finance - Financial
Control
ANZ Pacific Regional Office



DHARMEND SHARMA
Head of Corporate Sales
Digicel (Fiji) Limited



GRACE VAREA
Manager Administration &
Finance
Reproductive & Family Health



JACINTA HESAIE
Senior Economist - Domestic
Activity & Forecasting
Reserve Bank of Fiji



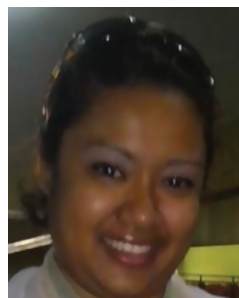
JOSEPH RAO
Guest Experience Champion
Holiday Inn Suva



LANIETA DABEA
Senior Flight Attendant
Fiji Airways



LITEA LAGILAGI
Associate Project Manager
ANZ Pacific Operations
Limited



MICHELLE KHAN
Customer Service Consultant
Williams & Gosling Limited



ROBERT PENE
Tug Master
South Sea Towage Limited



SEMAIMA LAGILAGI
Administrator
FASANOC Women in Sports
Commission



TAINA SHANKARAN
Manager Shipping
ANZ Banking Group Ltd



TIMOCI VULA
Chief of Staff
Fiji Times Limited



TOMASI VOSANIBOLA
Principal Investigation Officer
Fiji Prisons & Corrections
Service



WAISALE IOWANE
Editorial Operations Manager
KPMG

2014 COMMUNITY PROJECTS

Hilton Special School - monetary contribution covering running costs for the children for 2 weeks.

Serua Island Financial Literacy Awareness - facilitated financial literacy awareness for the people of Serua Island through the promotion of savings, micro finance and planning for retirement. Partners for this event included Westpac Bank, the Fiji National Provident Fund (FNPF), National Centre for Small and Micro Enterprise Development (NCSMED), Elections Office, Fiji Volleyball Federation's Sports Clinic and Reproductive & Family Health Association of Fiji (RFHAF)

Book Donations - distributed over 140 boxes or about 7000 donated library books to Serua Island, Burebasaga District School, Lami Primary School, Lami High School, Sawani Primary School (first books for their new library), Ratu Ravuama Primary School, Namataku District School, Vatumali, Women's Prison – prompted the setup of a small library corner for inmates.

Financial Literacy & Small Business Training – Women's Prison - conducted financial literacy awareness and small business training for ten inmates at the Women's Prison in Suva.

Tamavua Village Hall - repainting of the Tamavua Village Hall in conjunction with the youth of Tamavua Village.

Community Projects Delivered in 2015

Nabitu District School In partnership with Rotary Suva - catalogue and handover approx. 1,600 books for library and catalogue them for the school

Women's Prison, Suva - Handover of approx. 200 books to add to the small library started in October 2014 (200 books donated)

Tamavua Village Kindergarten - Supply art & craft supplies and books for kindergarten class, as a follow-up to the painting of the hall done in 2014

West Based Kindergartens (Vitogo Village Kindergarten & Lovu HART Home) - Supply art & craft supplies and books for kindergarten class

Nadi Dental Clinic In partnership with Rotaract Nadi - Scrub down clinic, prep for painting, paint, donation of a computer , curtains, cabinets.

Valelevu Health Centre In partnership with Mark One Apparel - Procure & install water tank with pump and piping to connect to the Hospital and also to staff quarters.

St Giles Hospital - Procurement of items listed by the hospital as priority needs.



2013 PARTICIPANTS



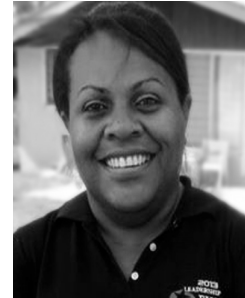
AMOL NARAYAN
Assistant Accountant
Motibhai & Company Ltd



CHARLIE MANUEL
Senior Loans Officer
Sugarcane Growers Fund



CHINNAMMA REDDY
Country Director
Projects Abroad (UK) Ltd



CILIA PARETI-WILSON
Marketing Administration
Assistant
Wyndham Vacatiion
Resort



EDWARD YEE
Area Manager Business
Banking Western &
Northern Division
Westpac Banking
Corporation



ELENA RAHIMAN
Finance Officer
Communications Fiji Ltd



ESALA HALAFI
Head of Operational Risk
Bank of South Pacific



ISOA WAINIQOLO
Acting Senior Economist
Reserve Bank of Fiji



JITENDRA PRAKASH
Field Sales Executive
Post Fiji



JULIANNE JOHANSEN
Business Development
Manager Wines & Spirits
Punjas Wines & Spirits



KRIS PRASAD
Programme Support
Officer
Fiji Women's Rights
Movement



KRITIKA KRIPAL
Brand Activation
Manager
Nestle (Fiji) Ltd



LEPANI MAKUBUNA
Area Manager Business
Banking - East
Westpac Banking
Corporation



LINESH KUMAR
Manager Information
Technology
Pleass Global Ltd



LUISA NAKAUCIRI
Customer Services
Manager
BSP Life



MANUELI DAUREWA
Senior Engineer
Total (Fiji) Ltd



MARETA FONG
Manager Financial
Analysis & Planning
Global Loans & Markets
Pacific
ANZ Banking Group Ltd



MILINIA NAITUYAGA
Senior Flight Attendant
Fiji Airways Ltd



NILESH CHAND
Finance Manager &
Company Secretary
Pacific Islands
SCA Hygiene Australasia
Ltd



SITIVENI MAROVIA
Manager Corporate
Responsibility, Micro
Finance & Rural Banking
ANZ Banking Group Ltd



TAMARA SMITH
Editorial Operations
Manager
Fiji Times Ltd



TEUILA LOCKINGTON
Customs Agent
Williams & Goslings Ltd



VIJESH PRASAD
Head of Customer
Operations & Finance
Digicel Fiji Ltd

2013 COMMUNITY PROJECTS

Leadership Fiji 2013 participants completed a Clothes & Book Drive for the Nadroga/Navosa Provincial Office (Cyclone Tomas affected areas) and Homes of Hope, Wailoku. As part of a visit to Bau Island, the group also donated supplies to Bau District School and made a monetary contribution to the Bau netball team. In keeping in line with their Vision to protect Fiji's environment they spent a Saturday planting mangroves in Nasese near the children's park. LF2013 also held a computer drive which enabled them to donate 11 computers to Lautoka Primary School and Shastri Memorial School in rural Ba. Their final group project for the year was a donation of supplies to the Little Ones Mobile Kindergarten at Savutalele Settlement, Tacirua.



2012 PARTICIPANTS



AJAY KUMAR
Customs Supervisor
Williams & Goslings



ALEX ELBOURNE
LegendFM Programs
Director
Communications Fiji Ltd



ANABEL ALI
Manager Audit
alizpacific



ANJINI BUKSH
Team Leader Rregioal
International
Westpac Banking
Corporation



AVANEESH RAMAN
FIU Analyst
Fiji Financial Intelligence
Unit (RBF)



AVINESH PRASAD SEN
Sales Depot Supervisor
and Exports Coordinator
British American
Tobacco



DISUSU DELANA
Economist
Reserve Bank of Fiji



HITESH CHANDRA
Senoir Human Resources
Officer
Vinod Patel & Co Ltd



JASON TUTANI
Park Manager - Sigatoka
Sand Dunes National Park
National Trust of Fiji



MAVIS YUEN
Human Resource
Assistant - Projects
Secretariat of the Pacific
Community



NOWAN LOW
Manager Process
Simplicity and Projects
BSP Life



PALINDA KAITU'U
Relationship Manager -
Commercial Banking
ANZ Group Banking Ltd



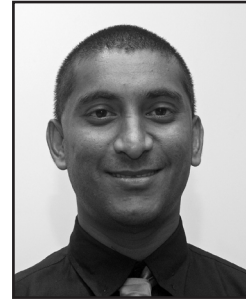
RAJESHWAR RAJ
Acting Senior Health
Inspector
Health Department - Nadi
Town Council



RAJSHREE BALEISUVA
General Manager
Fiji Cancer Society



RAKESH ROSHAN
Loans Officer
Administration
Sugar Cane Growers Fund



RITESH SHARMA
Purchasing &
Warehouse
Manager Pleass Global
Ltd



SANJEEV ODDYAR
Assistant Accountant
Motibhai Group of
Companies



SHAMITA PRAKASH
FX Market Advisor
ANZ Banking Group Ltd



SHAYNE SORBY
Associate
Munro Leys



SHIVNIEL CHAND
Supervisor - Suva
Terminals
Total Fiji Ltd



SINA SULIANO
Project Officer
Adventist Development
Relief Agency



SUE LEALEA
Conference & Event Sales
Executive
Holiday Inn Suva



USA KALIM
Team Leader - Tellers
Westpac Banking
Corporation



VINAL SINGH
Manager IT
Total Fiji Ltd



WILL OSBORNE
Business Relationship
Manager
Bank of the South Pacific





2012 COMMUNITY PROJECTS

Save the Children Fiji

Leadership Fiji 2012 donated \$1000.00 to Save the Children Fiji (SCF) to assist children in the Western Division who were affected by the floods. As part of their community initiative under the leadership program, the group held a work-a-thon at the Nasese foreshore and part of the funds raised were donated to provide assistance towards the free lunch program coordinated by SCF.

Habitat for Humanity

LF2012 partnered with Habitat for Humanity Fiji (HFHF) to build 2 houses for flood victims at Sovi Bay, Vatukarasa, near Sigatoka. The project was in line with the disaster recovery projects carried out by HFHF in areas affected by the flooding in March 2012. LF2012 spent a day at the site helping with painting and general construction work. They also donated helmets, hammers, gloves and other building materials to assist with the project which was donated to HFHF after the completion of the project. This was a great learning experience for emerging leaders and gave the group a better understanding of what it takes to deliver change in people's lives via charity and community work.

Navatu Primary School, Rakiraki

LF2012 provided assistance to the school to access a regular supply of clean water by funding the connection from the borehole to the water tank. Previously the school faced constant water supply problems because of the dry season and shared water supply with the nearby village. LF2012 also donated library books and stationery to the school.

St. John's Association's Training Room

For about a month of ongoing preparation and maintenance, LF2012 successfully completed the renovation needs for the St John's Associations Training room as part of their community work during the year. They revamped the training room by painting, and providing plumbing works, new curtains, book shelves, noticeboards, and whiteboards. This project allowed the revamp of facilities that provides first aid training and services to thousands of citizens from all walks of life since its inception.



**LEADERSHIP
FIJI**

2011 PARTICIPANTS



AMITESH SHARMA
Optical Dispenser
Eyesite Optometrists



APENISA TUICAKAU
Senior Economist
Reserve Bank of Fiji



CAMARI TURAGARUA
BSP Life
Manager



**ELENOA
DOLODLOTAWAKE**
Supervisor – Human
Resources
Williams & Gosling Ltd



**ELEANOR
TABAKUCORO**
Acting Operations
Manager
Avis Fiji



FEHRIAL AFZAL
Foreign Exchange Dealer
& Markets Advisor –
Commodity & Sales
ANZ Banking Group



JEETESH KUMAR
Marketing Manager
SCA Hygiene Australasia
Limited



JOSEPH HOWARD
Commercial Securities
Officer
Westpac



MAUREEN NISHA
Reservations Supervisor
Holiday Inn Suva



MEREIA RASIGA
President/Founder
Mission Empowerment
Solo West



MOHINESH PRASAD
Sales Executive Retail
Central Eastern
TOTAL (Fiji) Limited



NEERA LAL
Business Analyst –
International Operations,
Westpac



RADHIKA RAJ
Assistant Manager
KPMG



RAJNESH KUMAR
Primary Manufacturing
& Engineering Manager
British American
Tobacco



RONALD SINGH
Accounts Supervisor –
Nadi
Motibhai Group of
Companies



RONIL SINGH
Senior Engineer
TOTAL (Fiji) Limited



SHARON NARAYAN
Projects Manager
Sigatoka Builders Limited



SNEHAL MORRIS
Regional Media Affairs
Specialist
Embassy of the United
States of America



SOWANI NABUKAVOU
Properties Manager
Bank South Pacific



TAVITE RAGOGO
Transport Business
Proprietor



TEVITA GADE
Acting Settlements
Officer
Reserve Bank of Fiji



**THERESA
YALIMAILAKEBA**
Team Leader Call Centre
ANZ Pacific Operations



VIJAY VARMA
Programme Director –
Radio Sargam
Communications Fiji
Limited



**VILISONI
QALOBOGIDUA**
Senior Properties Officer
ANZ Banking Group

2011 COMMUNITY PROJECTS

Leadership Fiji 2011 participants assisted the Nadi Hospital by providing the maternity ward with linen as well as toiletries for new mothers. Additionally, the group assisted Treasure Home (Nadi) by providing food hampers. The group also refurbished the kitchen at St. Christopher's Home as well as painted part of Homes of Hope. To assist needy children, LF2011 sponsored two children under the Foundation for the Education of Needy Children (FENC) program and completed a shoe drive for Nokonoko Primary School in Sigatoka. In December 2011, the group organised a very successful Teen Leadership Camp for 60 teenagers.

2010 PARTICIPANTS



APENISA SENILOLI
Head of Electronic
Banking Services
ANZ Bank



ANDREW VAN WILLIES
Manager Balance Sheet
& FX trading
ANZ Bank



SANJAY KUMAR
Team Leader Insurances/
Claims
Motibhai & Company
Limited



MELE MARAFONO
Head of Banking
Operation
Bank South Pacific



**PRIYANKA D
DAMODRAN**
Operations Admin
Officer
Total (Fiji) Ltd



**NIRENJEEV NISHANT
KUMAR**
Management Accountant
& Officer-in Charge Central
Share Registry Ltd | South
Pacific Stock Exchange Ltd



ASHA ALI
Branch Manager
ANZ Bank



ANGELEENA PALA
Analyst
Asian Development
Bank



DEVEND RAM
Manager Logistics &
Marketing
Niranjans Autoport Ltd



**ROPATE
DAUCAKAKA
PARETI**



SHAINESH VIKASH LAL
Sugar Cane Growers
Fund



AMELIA RIGSBY
FM96 Program Director
& FM96 Mid Morning
Show Host
Communications Fiji Ltd



JOSEPH MAGNUS
Senior Relationship
Manager, Signature
Priority Banking
ANZ Bank



KAMLESH KUMAR
Fire Officer
National Fire
Authority



ATELINA MUAVONO
Head of Human
Resources – Insurance
BSP Life



VIJAYEETA RAJ
Brands Executive British
American Tobacco



AKTAR ALI
Senior Safety / Risk
Coordinator
Fiji Electricity Authority



AMIT KUMAR
Credit Officer
Williams & Gosling Ltd,
Nadi Airport



SATISH NARAYAN
Project Manager
Saraswati Development
Unit

2010 COMMUNITY PROJECTS

As part of their vision to Ensure Prosperity and Equality for all People, LF2010 have faithfully continued with their 5 year commitment to Hilton Special School where they will 'Sponsor a Child' to ensure one child at the school gets the education they need and deserve. In March, 2011 they group donated \$800.00 to the school.

In July they completed a Clothes and Craft Drive for St. Giles Hospital consisting of eight bags of clothes and art supplies. Later in the year, the group also donated potting soil and seeds.

To contribute to a Sustainable Economy through Care for the Environment, LF2010 embarked on their project to plant 50,000 new mangroves by 2020. This is an on-going yearly project directly benefitting villages that use the sea as their source of livelihood. In 2011, they planted 5,000 new seedlings at Mua-i-vuso Village with volunteers from BSP and youth groups as well as friends of LF2010. LF2010 would like to acknowledge the contribution of BSP who donated \$1,000.00 worth of planting equipment.

LF2010 also helped to plant 2,500 bundles of Vetiver grass at the Homes of Hope in Wailoku.

The group also received a request from the Ministry of Health to help fund the Jaipur Foot Project which directly assists amputees by giving them prosthetic limbs to improve their quality of life. LF2010 have so far raised \$2,000.00 for the project and will continue to fundraise for the refurbishment of the fitting center.

2009 PARTICIPANTS



AISAKE MARIO MAUSIO
Manager Process
Efficiency & Dev.
WESTPAC Suva



AMANDA SMITH



BILL LOCKWOOD
Credit Controller
Williams and Gosling,
Suva.



LAISIASA DAVE
Creative Director
Communications Fiji Ltd



DEEPIKA DEVI
British American
Tobacco



ELIZABETH MAKI
Sales & Marketing
Manager
Willams & Gosling Ltd



FAIYUM ALI
Manager & Compliance
LTA - North



GOKUL NAIDU
Operations Manager
Datec Fiji Ltd



ILAITIA TUINAMOALA
Head of Internal Audit
Colonial Fiji Group
Limited



JASON LI



**JESE
TIKOMAILEPANONI**
DY Manager Customer
Services
TOTAL (Fiji) Ltd.



**JONE TUPOU
NAWAIKULA**
Governance Officer
Foundation for Rural
Integrated Enterprises N
Development (FRIEND)



LAILANIE BURNES
WorldMark Wyndham



LOSANA T. AH YUK
Operations Assistant
Asian Development
Bank



MILI NAIVANAWALU



MOHAMMED ALFAAZ
LATEEF
Manager Regional
Applications Services
WESTPAC Banking Corp
- Pacific Banking



NANCY TIKOISUVA
The Office of the
Director of Public
Prosecutions



NILKANT LAL
Accountant Manager
JP Bayly Trust



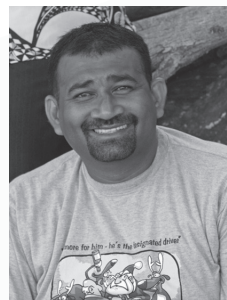
RAVINESH
CHAUDHARY



ROSA JOHANSEN-
CHUTE
Marketing Manager
ANZ Bank - Suva



ROSINI RAVONO
Ministry of Health



ROUHIT KARAN SINGH
Manager Health Services
Lautoka City Council



STELLA TIKO
Senior Finance Assistant
Asian Development Bank



TUPOU HALOFAKI
Bank of the South
Pacific



VERENAISI TUVUKI
RAICOLA
The Fiji Times Ltd



VILIAME TUINAMOALA
System Officer
Reserve Bank of Fiji



2009 COMMUNITY PROJECTS

LF09 along with some key contacts in the US (Dr. Hendricks of the Loloma Foundation) managed to secure 10 Wheel-Chairs and books for donations around the country. The books were delivered to several schools on Viti Levu (Tailevu, Nadroga and Suva) and an island primary school in Lomaiviti. The wheelchairs were donated to various organizations and individuals including CWMH, Lautoka Old Peoples Home (LOPH), Samabula Old Peoples Home (SOPH). The delivery of these wheel-chairs and books were made possible with the assistance of W&G.

Samabula Old Peoples' Home (SOPH) Campaign Phase I of the SOPH Campaign focused on a clean-up drive. Phase II included the installation of 2 hot water systems for the Male & Female bathrooms and the repainting of the kitchen with paints sponsored by Resene Paints. Phase III included the provision of needed food trolleys for SOPH.

During a visit to the Naboro Prison complex, a book drive was organized. In partnership with Wyndham Resort, LF09 presented Lautoka Old People's Home with new blankets and wheel-chairs from the Wheel-Chair Drive. The Sujit Foundation program sought assistance for LF09 to help prepare a home for Sujit and this was provided. LF09 also has a member sitting on the board.

Fijineighbours.com is a community development program first introduced to a community in Caubati. This program focuses on community-interaction by way of development programs and also focuses on community security.

When part of the Dilkusha Girls hostel burnt, LF09 fundraised to help rebuild the hostel. LF09 also supports the Dilkusha Girls hostel on an annual basis by way of providing food supplies. Part of the Dilkusha support includes an initiative brought up by an LF09 member to mentor teenagers. A pilot program was introduced in 2010 with a youth at the Dilkusha Hostel.

LF09 fundraised and donated to the efforts for rebuilding Samoa following the Tsunami. In partnership with FENC Fiji LF09 obtained sponsors for 10 students for their education.

Located about four kilometers from the main Kings Highway, Tavua Andra Primary School was built in 1965 and caters for approximately 105 students who have been using pit toilets since its inception. With the assistance of Wyndham Resorts a block of flush toilets was completed in 2010.

Leadership Fiji 2009 Graduates embarked on collecting 1000 story books for Vatuvonu Primary School in the North which is situated in the Bay of Buca, Cakaudrove.

Suva Special School was in need of a 3A Photocopier (approx. \$7k) for the schools activities LF09 assisted and fundraised and partnered with Datec (Fiji) Limited to see this initiative through.

LF09 have also embarked on expanding their horizons by seeking self-development by working with other organization to grow their leadership knowledge. Today, LF09 has members represented in boards such as TPAF, Senior Citizens Home (SOPH), Fiji Environmental Association, Sujit Foundation, Bible Society of Fiji & FENC Fiji.

2008 PARTICIPANTS



ASHITA LIN
Admin / Credit Manager
Williams and Gosling



CATHY WONG
Director
Suva Physio Centre



ELVIN LAL
Management
Accountant
Solander Pacific Limited



EPELI RACULE
Operational Risk Officer
Westpac



GITESH NAIR
Compliance and AML
Officer
ANZ



IDA BUKSH
Rooms Division
Manager
Holiday Inn



ISIRELI DAUSIGA
Chief Prison Officer
Fiji Prison



JAININE PENJUELI
Marketing manager
Westpac



JIGNESH PALA
Associate Director
Kontiki Capital Limited



KAVEKINI DIGITAKI
Staff Officer operations
Fiji Prison



LISA PENE
Assistant Manager
business Financial
Services
ANZ



MELVIN HOUNG LEE
Team Leader EBS
Support
ANZ



NILESH KUMAR
Project Manager
ANZ Pacific Operations



PAULINE KOSTATINO
Project Manager
transformation
ANZ Pacific Operations



PRAVEEN MAHARAJ
Senior Lecturer,
Pharmacy
Fiji National University



ROMANA ANDREWS
Manager Packing
& Removals Dept
Williams and Gosling



RONEEL LAL
News Reporter
Communications Fiji
Limited



RUPENI SILIMAIBAU
Head, Strategic Business
Development
The Digital Group



SECI TALENIWESI
Manager - Exports
Proceeds Monitoring
RBF



SHARUN ALI
Manager Quality &
Compliance
Air Pacific



SHUSENDRA SINGH
Supply Chain Manager
British American
Tobacco



SUBRINA HANIF
Board Secretary
Reserve Bank of Fiji



SUNIL PRASAD
Assistant Manager Tax
Division
KPMG



TEERATH SHANDIL
Management
Accountant
Solomon Telekom
Company Ltd



VENIANA TUKANA





2008 COMMUNITY PROJECTS

Baby Joshua gets Another Chance at Life

Baby Joshua (who lives with his mum- Laisa, at Homes of Hope-centre for single mums to help them get back on their feet), was born with talipes equino varus, or club feet. This is a severe physical deformity of both feet and will require series of extensive operations and physiotherapy. These operations were not possible in Fiji and Baby Joshua needed to have to go to Hawaii for the beginning of his many operations. The group managed to raise \$3,000.00 which went towards his second and subsequent operations.

Early Childhood Centres

LF 2008 teamed up with Save the Children Fund Fiji (SCF) and the communities in establishing kindergarten centres around Fiji. The Early Childhood Education program was developed in 2002. It has progressed from humble beginnings of having a mobile play group which travelled around to various communities offering education/play to the children of the communities; to now establishing permanent kindergarten/play centres in various communities around Fiji.

Seven (7) centres were identified by SCF. The communities had to be part of these projects as they owned the project and they were responsible for the long term viability of the project.

The team was able to establish all 7 kindergartens in Wainadoi Settlement; Lokia Community (Nausori); Kalokolevu Village; Natua Settlement (Labasa); Saivou Settlement (Labasa); Yaudiga Settlement (Labasa) and Matawalu Village (Lautoka). Each kindergarten was supplied with learning and educational toys, teaching aids/equipment like easels, chalk, plasticine, books, blackboards, storage equipment.

2007 PARTICIPANTS



AMELIA SAWAU
 Manager Consumer
 Credit Control
 Westpac Banking
 Corporation



ANISH LAL
 Food & Beverage
 Manager
 JJ's On the Park



**ATECA LEDUA-
 TOGANIVALU**
 Team Leader
 Administration
 Communications Fiji Ltd



DARLENE VILIAME
 Money Market Dealer
 ANZ Bank



HENRY KAN
 Balance Sheet Manager
 Westpac Banking
 Corporation



JOELI NAIVOLASIGA
 Operations Dept, Suva
 National Fire Authority



KESHNI KRISHNA
 Resort Accountant
 Wyndham Vacation
 Resort



MURGESSAN PILLAY
 Financial Controller
 Finance Division
 BSP



**NACANIELI
 BAKEIDAKU**
 Structural Fire Safety
 Dept, Lautoka



NIRAJ BHARTI | Fiji TV



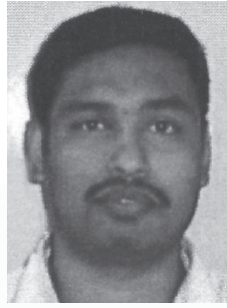
PETAIA TUIMANU



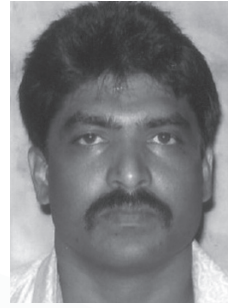
RACULE KETECCA
 Relationship Manager-
 Commercial
 ANZ



RADHIKA MURTI



RAKESH KHANNA



**RAJENDRA
SHEROMANI**
Acting Laboratory
Supintendent, Labasa
Ministry of Health



RAVINESH DEO
Business Analyst
ANZ Pacific Operations



RICK EYRE
Commercial Manager
West
Williams & Gosling



ROWEENA ERASITO
Senior Manager Human
Resources
RBF



SHIROF KHAN



TEVITA YASAWA
Head of Projects Office
BSP



TINAI COLAWAI
People Capital
ANZ, PNG



TINA FINIASI
Team Leader Settlement
& Reconciliation
ANZ Pacific Operations



VANESSA KILNER
Group Manager
Marketing & Public
Relations
Telecom Fiji Limited



VIJAY NARAYAN
Assistant Project
Analyst
Asian Development
Bank



WINSTON PENJUELI



2007 COMMUNITY PROJECTS

Vision Fiji

President Ratu Epeli Nailatikau presented 10 awards to young people at the inaugural Fiji Children's Award on Saturday Nov 20th, 2010. These 10 young people had shown exemplary achievements in various areas of their lives despite their personal circumstances. Recipients are between the ages of 6 and 17 years and received \$500 to assist in their school expenses.

Book Donation to Naboro Maximum Prison

In an effort to assist prisoners the group donated 13 cartons of reading books and magazines for the prisons library.

Smoke House for National Fire Authority of Fiji Northern Division

After seeing the great need for fire safety in our communities after the loss of lives in fires in 2007, the group decided to assist the NFA in fundraising for a smoke house which assisted the NFA in their awareness campaigns. The smoke house costed \$22,000 was sponsored by the ANZ, Westpac Bank, Wyndham Resort, Sangeeta Maharaj and Leadership Fiji 2007.

Blood Drive

Organised by the group, more than 60 businesses and the general public turned up to donate blood to the Fiji Blood Bank. The event resulted in 41 pints of blood being donated.



2006 PARTICIPANTS



JONE VUKIMOALA



JAYSHWEEN KUMAR
Management Accountant
Bendigo & Adelaide Bank



RAKESH LAL
Finance Manager
Westpac



LILIANA PARETI
Project Manager
Reenginerring
ANZ Pacific Operations



RONALD RAMA
IT Manager
British American
Tobacco



NANISE ROKOBIRI
TABUA
Assistant Denerau
Corporation



NITENDRA KUMAR
Manager Property
Development &
Management
Carpenters Properties Ltd



SARANJIT SINGH
Manager Finance
ANZ Pacific Operations



DR SIDDARTH NAIDU
General Practitioner



**WILISONI
KURUSAQILA**
Director Public
Prosecution's Office



TIMOCI NAKARURU
National Fire Authority



**MARGARET
LOGAVATU**
Programme Manager
AusAid



PETER PAUL FATIAKI
Head of Life Operation
BSP Life



**PAULA LESUBULA
TAUFA**



GLENIS YEE
Munro Leys



CHARLES TAYLOR
Legend FM
Programme Director &
News Business
Development Manager
Communications Fiji Ltd



DURI BUADROMO
Assistant Manager
Financial Systems
Development
RBF



ALANIETA VAKATALE



SHAHEEN ASGAR
Eyesight Optometrist

2006 COMMUNITY PROJECTS

Mental Health St Giles Awareness & AusAid Funding for a Vehicle

On 28 January 2010, AusAID presented a new vehicle to the Ministry of Health's Community Mental Health Outreach Program for use in the Community Mental Health Outreach program at St. Giles Hospital. The vehicle helped the outreach program in its efforts to assist people living with mental health issues and to increase greater community understanding and acceptance of people living with mental illness.

LF 2006 in close partnership with the Psychiatric Survivors Association (PSA) published a collection of poems and stories of survivors of mental illness. This book, titled "Fright or Light" was launched in 2008 as part of a public awareness campaign on World Mental Health Day to assist in breaking down the stigma associated with mental illness. Feedback received from members of the public, health workers and the PSA has been overwhelming positive'.



2005 PARTICIPANTS



ALITI KIJI BAVOU



DAVID TOGANIVALU
Solicitor
BSP Life



ANAND KUMAR



DEEPIKA LODHIA



ANARE MANULEVU
Senior Manager, Audit
KPMG



DINESH CHAND
Systems Engineer
NEC Australia



DR BAINATO
KOROJIUTA
Division Dental Officer
Ministry of Health



GRACE KING
Finance, Adminstrator
and Control Officer
Asia Development Bank



BENJAMIN SEDUADUA
Resort Owner and
Director
Rendezvous Surf and
Dive Resort Fiji



HENRY BROWN
Assistant Police
Commissioner
Fiji Police



ISHWARI SHANKAR



RANDHIR SINGH
Inspector
Fiji Police Force



JORDIANN SMITH ALI
Manager Human Resources
Westapc



SARITA HARISH
Lecturer in Education
University of Fiji



MERELITA ISIMELI
Manager PR and Customer Service
Post Fiji Limited



SALOME BUADROMO
Manager Human Resources
ANZ, Samoa



MILDRED WADE
Sales Executive
Yellow Pages



SAVENACA RALAGI



RAMEHWARAN NAIR



SEMI LEWENIQILA
Principal
Leweniqila Baristers and Solicitors



SHARVIND KUMAR
Manager Imports / IT Support (West)
Williams and Gosling



TEVITA MAU
Manager
Post Fiji Limited



SHARYNE FONG
Executive Manager
BSP



UMESH PRASAD
Manager Finance & Planning
Fiji Rugby Union



TIMOCI MOTOKULA



YENGTESHWAR NAIDU





2005 COMMUNITY PROJECTS

Friends of Hilton

Frank Hilton inspired the group when he spoke to them at a Poverty Session in 2005 and when asked the question “if there was one thing you would want to do, what would it be?” His response was “there was an urgent need to implement an early intervention training program of families and caregivers of children with disabilities”.

The LF 2005 group hosted the Red October Charity Dinner in 2005 as its community project and from the little \$26,000 initially raised the CAL training program commenced in May 2006.

Friends of Hilton was founded to support the CAL training program and in July 2006 introduced Fiji’s Greatest Charity Golf Challenge together with the Spastic Centre of Australia and the National Golf Association of Fiji... an event which continues to this day.

Friends of Hilton, whilst founded by the LF 2005 year group, now includes other like minded individuals who have the same passion and interest to create awareness on special abilities and help raise funds through this worthy cause. Since its inception Friends of Hilton has raised nearly \$200,000.00.

Since May 2006, the CAL Program has changed many lives and created a platform for the future development of disability services in the Fiji Islands. To date:

- 38 people have been trained as community disability workers
- 15 have completed the ‘Train the Trainer’ module
- 9 addition trainees participated in modules 1–5
- Over 520 children and adults have received an individual appointment and referrals made to either physiotherapists, Health Sister and Medical Doctor, Project Heaven and Eye Department and Social Welfare departments
- 29 children and adults have received specially fitted wheelchairs and other equipment
- In October 2010 Friends of Hilton funded the installation of internet connection for the Suva based Fiji Crippled Children Society institutions, Hilton Special School, Hilton Hostel and the Society Office.

Friends of Hilton was a nominee for the 2009 Fiji Times Pride of Fiji Awards and also won the Inaugural Leadership Fiji Most Outstanding Community Project in 2010.

2004 PARTICIPANTS



ATUNAIISA SIWATIBAU
Partner
Siwatibau and Sloan



FERETI ATALIFO
USP



JOSEPH KUMAR
Business Banking
Manager
Westpac



RAVENDRA ACHARI
Finance Manager
Williams and Gosling



**DR SALANIETA
SAKETA**
Permanent Secretary
for Health



ASHWIN LAL
Quality Assurance and
Process Improvement
Manager
British American
Tobacco, Samoa



MELANIANI GAVIDI
Senior Education
Officer
Ministry of Education



ASISHNA PRASAD



NILESH PATEL
Owner
Neal's Trading



**RADIKA S.
KARUNARATNE**
Manager Customer
Insights & Analysis
Telecom Fiji



ANNA PADARATH



INOKE BAINIMARAMA
Head of Marketing,
Pacific Marketing
ANZ



PRAVEEN SINGH



PENI TORA
Senior Manager
Ernest and Young
Chartered Accountants



MALTI KUMAR



KITONE NADARO



NEMANI LIGADUA
Assistant
Superintendent



SATYA NAND
Programmes Director



SHAMIN KHAN
Manager International
Help Services
ANZ Pacific Operations,
PNG



UNISE CAWARU
Management
Accountant
SPC



ANTHONY
TAVUTAVUVANUA

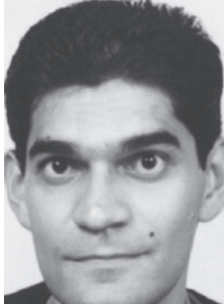


VILIAME BULEWA



IAN LEE

2003 PARTICIPANTS



DAVID DUDLEY
Manager Corporate
Banking
ANZ



JINESH PATEL
Sales & Marketing
Executive
Motibhai Group



EDDIE YUEN
Shipping and
Commercial Manager
Williams and Gosling



JONE VULI
Manager Credit
Westpac Tonga



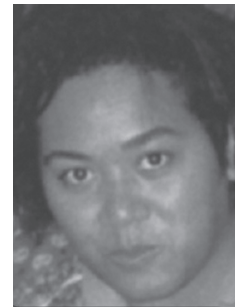
RATU EPELI
VUETIBAU



KIRAN SINGH



FRANCES LOGA
Manager Human
Resources
Telecom Fiji



LAISA BALE



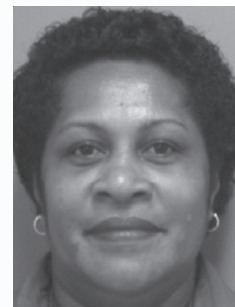
ISIROMI
BAYAMEYAME
Chief Executive Officer
Yasana Holdings



MARCUS HILL
Photographer
Islands Development



PITA
BULAMAINAVULA



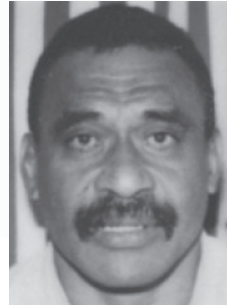
THELMA SAVUA
Corporate & Regulatory
Affairs - Projects
Manager
BAT NZ



RITESH PATEL
Chief Information
Officer
Office Brands



VIJAY NARAYAN
News Director
Communications Fiji
Ltd



SEREMAIA TUROGA
Principal Valuer
Agricultural Land
Tribunal Department



VIKASH SINGH
Area Regulatory Affairs
Manager
Australasia



SHALINI SINGH
General Manager \ Director
Oporto Sylvia Park
Restaurant



WILLIE KWONG
Principal Auditor -
Team Leader Large
- Int
Fiji Revenue & Customs
Authority



TARAI KAMIKAMICA
Corporate Services
Manager



TERRENCE LOW
Chief Executive Officer
ANZ, Kiribati

2002 PARTICIPANTS



ARSHAD DAUD
Managing Director
Midlink Marketing



JIUTA WAKOLO



AUTIKO LOULOU
Manager Planning
Telecom Fiji



MALAKAI VEISAMASAMA
Programme Director
Viti FM



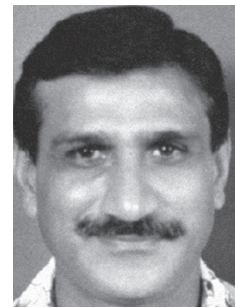
ESETA NADATUDAVUKI
Retail Area Manager -
East
Westpac



MARICA HALACY



FILIMONI VOSAROGO
Senior Associate
Vakaloloma &
Associates



MOHAMMED MAQBOOL
Sales Representative
BSP



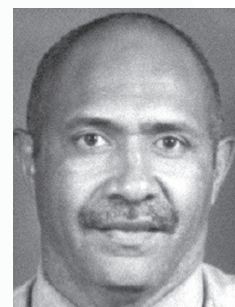
IVAN FONG
Manager - Interconnect
& Regulatory
Telecom Fiji



MELI NACUVA



RAJESH PATEL
Operations Manager
Motibhai Group



TIMOCI TAVANAVANIA
MBA Student



RITESH SINGH
Head of Operations
Pacific & Business
Manager
ANZ Pacific Operations



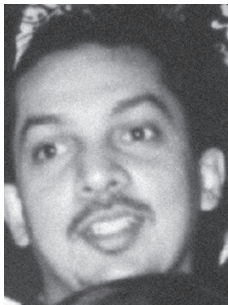
VIRSILA BUADROMO
Fiji Women's Rights
Movement
Executive Director



SALOTE ULUINACEVA
General Manager
Business Sales



VINNETA NAND
Political &
Communication
Advisor
British High Commission



SANJAY MAHARAJ



WASEA TUIDRAKI
Administrator
Sigatoka
- Lautoka Town Council



SATENDRA KUMAR



SOPHIE FOSTER



NAVI SOVALAWA
Senior Properties
Officer
Westpac



ACKNOWLEDGEMENTS

The Leadership Fiji Management Board would like to acknowledge the efforts of all the presenters who gave of their time to address the participants during the various sessions. Their contribution to the program has been invaluable and without their support, the program would not have achieved the obvious success it has.

During the year, a number of organizations assisted by providing facilities and other services. The Board would like to extend its appreciation to all those friends of the program listed below:

ANZ
Bank South Pacific
BSP Life
Westpac Banking Corporation
Reserve Bank of Fiji
Pacific Leadership Program
Communications Fiji Limited
Fiji TV
The Fiji Times
Fiji Broadcasting Corporation
Williams & Goslings Limited
Flour Mills of Fiji
British American Tobacco
Fiji Corrections Service
Mark One Apparel
Yees Cold Storage Limited
Australia Pacific Technical College
Spices of Fiji Limited
Viti Property Limited
Vunikoka Farm
Ben's Trading
Crab Company of Fiji
Government Agricultural Research Station
People's Community Network
Hilton Special School
Koroipita Community, Lautoka
FSC Penang Sugar Mill
Tavua Town Council
Punjas Limited
FRIEND Fiji
Vatukoula Gold Mine Limited
Holiday Inn Suva

The Board would also like to acknowledge the support from the spouses and families of all the executives and participants of Leadership Fiji as well as the unwavering support from the Leadership Fiji Alumni Executive Committee and alumni members.



2015 AUDIT REPORT

| CONTENTS | Page |
|---|---------|
| Company Directory | 2 |
| Statement by Directors | 3 |
| Auditor's Report | 4 |
| Statement of Financial Position | 5 |
| Statement of Income and Retained Earnings | 6 |
| Statement of Comprehensive Income | 7 |
| Statement of Cash Flow | 8 |
| Notes to the Financial Statements | 9 to 12 |

COMPANY DIRECTORY FOR THE YEAR ENDED 31 DECEMBER 2015

| | |
|--------------------------------|--|
| NATURE OF BUSINESS: | To educate, provide training, networking and to enhance and promote future leaders in Fiji. |
| REGISTERED OFFICE: | 231 Waimanu Rd Suva |
| DIRECTORS: | William H Parkinson Joel Sahai Sufi Dean Sharyne Fong Avaneesh Raman Ilaitia Tuinamoala |
| MEMBERS: | Praveen Maharaj Litea Lagilagi |
| SECRETARY TO THE BOARD: | Melissa Koster-Levaci |
| HONORARY AUDITORS: | aliz pacific Chartered Accountants & Business Advisors Suva |
| SOLICITORS: | Messrs Lateef and Lateef Barristers & Solicitors Suva |
| BANKERS: | Bank South Pacific BSP Life Centre Suva |
| HEAD OFFICE: | 231 Waimanu Road Suva |

STATEMENT BY DIRECTORS FOR THE YEAR ENDED 31 DECEMBER 2015

In accordance with a resolution and in the opinion of the Directors of Leadership Fiji Limited we state that:-

- (a) the Statement of Comprehensive Income is drawn up so as to give a true and fair view of the loss of the Company for the year ended 31 December 2015;
- (b) the Statement of Financial Position is drawn up so as to give a true and fair view of the state of affairs of the Company as at 31 December 2015;
- (c) the accompanying Statement of Cash Flow is drawn up so as to give a true and fair view of the cash flows of the Company for the year ended 31 December 2015;
- (d) at the date of this Statement there are reasonable grounds to believe that the Company will be able to pay its debts as and when they fall due; and
- (e) The Financial Statements have been made out in accordance with Applicable Accounting Standards and the Companies Act, 1985.

For and on Behalf of the Board and in accordance with a resolution of the Directors.


.....
DIRECTOR


.....
DIRECTOR

Dated at Suva, this 29th day of August 2016.



aliz pacific
Chartered Accountants and
Business Advisors

Suva Office
Level 8, BSP Life Centre
3 Scott Street, Suva.
P O Box 2475
Government Buildings, Suva, Fiji
Tel: (679) 3314044 Fax : (679) 3302188
Email : aliz@alizpacific.com.fj
Website: www.morisonksi.com

Nadi Office
Level 3, aliz Centre
231 Martintar, Nadi.
P O Box 11064
Nadi Airport, Fiji
Tel: (679) 6728308
Fax : (679) 6728443
Email : aliz@alizpacific.com.fj

LEADERSHIP FIJI LIMITED
(A Company Limited by guarantee, and not having a share capital)

INDEPENDENT AUDIT REPORT

Scope

We have audited the financial statements of Leadership Fiji Limited for the financial year ended 31 December 2015, consisting of Statement of Financial Position, Statement of Income and retained Earnings, Statement of income and expenditure, Statement of Cash flows and accompanying notes set out on pages 4 to 11. The Directors of Leadership Fiji Limited are responsible for the presentation of the financial statements and the information they contain. We have conducted an independent audit of these financial statements in order to express an opinion on them to the members of the Leadership Fiji Limited.

Our audit has been conducted in accordance with Fiji Auditing Standards to provide reasonable assurance as to whether the financial statements are free of material misstatement. Our procedures included examination, on test basis, of evidence supporting the amounts and other disclosures in the financial statements, and the evaluation of accounting policies and significant accounting estimates. These procedures have been undertaken to form an opinion as to whether in all material respects, the financial statement are presented fairly in accordance with Fiji Accounting Standards so as to present a view which is consistent with our understanding of financial position and the results of the activities of Leadership Fiji Limited.

The audit opinion expressed in this report has been formed on the above basis.

Limitation to Scope

It is not practicable for Leadership Fiji Limited to establish accounting control over all sources of income prior to its receipts and accordingly it is not possible for our examination to include audit procedures to extend beyond the amounts recorded on the books of Leadership Fiji Limited.

Audit Opinion

In our opinion, subject to the possible effects of the limitations imposed by the foregoing, financial statements have been properly drawn up so as to present fairly the state of affairs of Leadership Fiji Limited at 31 December 2015 and of the results of its activities for the year then ended.

aliz pacific
aliz pacific
CHARTERED ACCOUNTANTS

DATE: 01st September 2016
SUVA, FIJI.

STATEMENT OF FINANCIAL POSITION AS AT 31 DECEMBER 2015

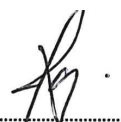
| | Notes | 31 December 2015 \$FJ | 31 December 2014 \$FJ |
|-----------------------------|-------|-----------------------------|-----------------------------|
| CURRENT ASSETS | | | |
| Cash and Cash Equivalent | 3 | 11,790 | 4,799 |
| NON CURRENT ASSETS | | | |
| Property, Plant & Equipment | 4 | 75 | 426 |
| Total Assets | | 11,864 | 5,225 |
| CURRENT LIABILITIES | | | |
| Other Payables | 5 | 460 | 463 |
| Total Liabilities | | 460 | 463 |
| NET ASSETS | | \$11,404 | \$4,766 |
| ACCUMULATED FUND | | | |
| Retained Earnings | | \$11,404 | \$4,766 |
| TOTAL FUNDS EMPLOYED | | \$11,404 | \$4,766 |

These Financials have been audited.

Signed for and behalf of the board and in accordance with a resolution of the Directors.



Director



Director

The Statement of Financial Position is to be read in conjunction with the notes to the Financial Statements set out on pages 9 - 12.

LEADERSHIP FIJI LIMITED (A Company Limited by Guarantee, and Not Having A Share Capital)

STATEMENT OF INCOME AND RETAINED EARNINGS FOR THE YEAR ENDED
31 DECEMBER 2015

| | Notes | 31 December 2015 \$FJ | 31 December 2014 \$FJ |
|---|-------|-----------------------------|-----------------------------|
| Net (Deficit) before Income Tax | | 6,637 | 4,164 |
| Income Tax Expense attributable to Operating (Loss) | 1.5 | 0 | 0 |
| Income/ (Expense) after Income Tax | | 6,637 | 4,164 |
| Earnings from the Beginning of the Year | | 4,766 | 602 |
| Earnings at the End of the Year | | \$11,404 | \$4,766 |

The Statement of Income and Retained Earnings is to be read in conjunction with the Notes to the Financial Statements as set out on pages 9 - 12.

STATEMENT OF COMPREHENSIVE INCOME FOR THE YEAR ENDED 31 DECEMBER 2015

| | Notes | 31 December 2015 \$FJ | 31 December 2014 \$FJ |
|--|-------|-----------------------------|-----------------------------|
| REVENUE | | | |
| Sponsorship - Cash | 7 | 77,550 | 55,000 |
| Sponsorship - In Kind | 8 | 37,500 | 40,650 |
| Participants Fees & Graduation Dinner | | 33,930 | 29,600 |
| TOTAL INCOME | | 148,980 | 125,250 |
| EXPENSES | | | |
| Advertisement | | 15,500 | 15,000 |
| Bank Charges | | 4,894 | 230 |
| Catering | | 13,529 | 4,579 |
| Depreciation | | 351 | 610 |
| Leadership Training Cost - Direct | | 18,458 | 2,730 |
| Leadership Training Cost - Transport Hire | | 12,499 | 4,205 |
| Overseas - Travelling & Accommodation | | 230 | 6,837 |
| Printing, Stationery & Postage | | 10,498 | 10,860 |
| Professional Fees - Audit & Accounting | | 5,000 | 5,000 |
| Rent, Office Space & Utilities | | 5,000 | 5,000 |
| Sponsorship - alumni summit | | 7,213 | 0 |
| Superannuation | | 5,260 | 4,997 |
| Travelling & Accommodation - Retreats & Local Taxi | | 10,765 | 30,510 |
| Wages and Salaries | | 29,918 | 27,848 |
| Communication & Internet | | 3,228 | 2,681 |
| TOTAL EXPENSES | | 142,343 | 121,086 |
| NET SURPLUS BEFORE INCOME TAX | | \$6,637 | \$4,164 |

The Statement of Comprehensive Income is to be read in conjunction with the Notes to the Financial Statements set out on pages 9 - 12.

STATEMENT OF CASH FLOW FOR THE YEAR ENDED 31 DECEMBER 2015

| | Notes | 31 December 2015 \$FJ | 31 December 2014 \$FJ |
|--|---------------|-----------------------------|-----------------------------|
| Cash Flow from Operating Activities | | | |
| Cash Receipts from Corporate Sponsors | | 77,550 | 55,000 |
| Participants Fees and Dinner | | 33,930 | 29,600 |
| Payments to Suppliers & Employees | | (104,494) | (79,828) |
| Net Cash (Used)/ Provided by Operating Activities | 6 (ii) | 6,986 | 4,772 |
| Cash Flow from Investing Activities | | | |
| Acquisition of Fixed Asset | | 0 | 0 |
| Net Cash Used by Investing Activities | | 0 | 0 |
| Net Increase/(Decrease) in Cash | | 6,986 | 4,772 |
| Cash Balance at Beginning of Year | | 4,799 | 28 |
| Cash Balance at End of the Year | | \$11,799 | \$4,799 |

The Statement of Cash Flow is to be read in conjunction with the Notes to the Financial Statements set out on pages 9 - 12.

FINANCIAL STATEMENTS FOR THE YEAR ENDED 31 DECEMBER 2015

1. STATEMENT OF ACCOUNTING POLICIES

1.1 General Accounting Policies

The general accounting principles recognised as appropriate for the measurement and reporting of results and Financial Statements on an historical cost basis have been followed by the Company and do not take into account changing money values or current valuations of non-current assets.

1.2 Particular Accounting Policies

The following particular accounting policies which materially affect the measurement of surplus/(deficit) and the financial position have been applied:-

1.3 Fixed Assets and Depreciation.

Fixed assets are stated at cost less aggregate depreciation. Depreciation has been calculated using the following rates: -

| | Straight Line |
|------------------------------|----------------------|
| Computer Equipment | 40% |
| Furniture Fixture & Fittings | 12% |

1.4 Value Added Tax (VAT)

The Statement of Financial Performance and Statement of Cash Flow have been prepared so that all components are stated exclusive of VAT.

1.5 Taxation

The Company is exempt from Company Tax under section 17 of the Income Tax Act.

1.6 Employee Benefits

(i) All employees who are Fiji Citizens belong to the Fiji National Provident Fund, an independent statutory administered fund. The Company has no liability for current or past service pensions.

(ii) The amounts expected to be paid to employees for the pro-rata entitlement to long services, annual and sick leaves are accrued annually at current pay rates having regard to experience of employee's departures and period of service.

1.7 Changes in Accounting Policies

There have been no material changes in accounting policies since the previous Annual Financial Statements.

2. SHARE CAPITAL

The Company has been incorporated under the Companies Act, Cap 247 and is a company limited by guarantee, and not having a share capital.

NOTES TO THE FINANCIAL STATEMENTS FOR THE YEAR ENDED 31 DECEMBER 2015

3. CASH AND CASH EQUIVALENTS

| Cash and Cash Equivalents | 31 December 2015 \$FJ | 31 December 2014 \$FJ |
|-----------------------------------|-----------------------------|-----------------------------|
| Cash at Bank - Bank South Pacific | 11,786 | 4,795 |
| Cash on Hand | 4 | 4 |
| | \$11,790 | \$4,799 |

4. (i) PROPERTY PLANT & EQUIPMENT

| | Date of Acquisition | Cost 31/12/15 | Accumulated Depreciation | Depreciation | W.D.V. 31/12/15 |
|--|------------------------|------------------|-----------------------------|--------------|--------------------|
| 31st December 2015 | | | | | |
| Camera | | 178 | 178 | 0 | 0 |
| Computer & Printer | | 6,661 | 6,661 | 0 | 0 |
| Logitech Pointer & External Hard Drive | | 392 | 247 | 94 | 51 |
| Asus Netbook | | 699 | 664 | 35 | 0 |
| Fax Machine | | 700 | 700 | 0 | 0 |
| Digital Camera | | 317 | 218 | 76 | 23 |
| Megaphone | | 136 | 136 | 0 | 0 |
| Data Projector | | 4,000 | 4,000 | 0 | 0 |
| Laptop | | 3,325 | 3,325 | 0 | 0 |
| Desktop Computer | | 400 | 253 | 147 | 0 |
| | | \$ 16,808 | 16,382 | 351 | 75 |

| | Date of Acquisition | Cost 31/12/14 | Accumulated Depreciation | Depreciation | W.D.V. 31/12/14 |
|--|------------------------|------------------|-----------------------------|--------------|--------------------|
| 31st December 2014 | | | | | |
| Camera | | 178 | 178 | 0 | 0 |
| Computer & Printer | | 6,661 | 6,661 | 0 | 0 |
| Logitech Pointer & External Hard Drive | | 392 | 247 | 94 | 145 |
| Asus Netbook | | 699 | 664 | 280 | 35 |
| Fax Machine | | 700 | 700 | 0 | 0 |
| Digital Camera | | 317 | 218 | 76 | 99 |
| Megaphone | | 136 | 136 | 0 | 0 |
| Data Projector | | 4,000 | 4,000 | 0 | 0 |
| Laptop | | 3,325 | 3,325 | 0 | 0 |
| Desktop Computer | June | 400 | 253 | 160 | 147 |
| | | \$ 16,808 | 16,382 | 610 | 426 |



(ii) Reconciliations

Reconciliations of the carrying amounts of Property, Plant and Equipment by class at the beginning and end of the financial year

| Office Equipment | |
|----------------------------------|-------|
| Carrying amount at the beginning | 426 |
| Additions | 0 |
| Disposals | 0 |
| Depreciation expense | (351) |
| | \$ 75 |

5. Other Payables

| Other Payables | 31 December 2015 \$FJ | 31 December 2014 \$FJ |
|----------------|--------------------------|--------------------------|
| FNPF | 345 | 345 |
| PAYE Tax | 115 | 115 |
| | \$ 460 | 460 |

6. Notes to the Statement of Cash Flow

(i) Reconciliation of Cash

Cash as at the end of the financial year as shown in the Statement of Cash Flow is reconciled to the related items in the Statement of Financial Position as follows:

| | 31 December 2015 \$FJ | 31 December 2014 \$FJ |
|-----------------------------------|--------------------------|--------------------------|
| Cash at Bank - Bank South Pacific | 11,786 | 4,795 |
| Cash on Hand | 4 | 4 |
| | \$ 11,790 | 4,799 |

(ii) Reconciliation of Net Cash Used by Operating Activities to Operating Income After Income Tax

| Operating Income After Income Tax | 31 December 2015 \$FJ | 31 December 2014 \$FJ |
|--|--------------------------|--------------------------|
| Operating Surplus/(deficit) After Income Tax | 6,637 | 4,164 |
| Add: Depreciation | 351 | 610 |
| Increase/(Decrease) in Other Payables | (3) | (2) |
| Net Cash Provided by Operating Activities | \$ 6,986 | 4,772 |

7. SPONSORSHIP - IN CASH

The following sponsorships in cash were utilised during the year by the Company : -

| | 31 December 2015 \$FJ | 31 December 2014 \$FJ |
|------------|--------------------------|--------------------------|
| ANZ | 15,150 | 15,000 |
| BAT | 10,000 | 10,000 |
| BSP | 5,000 | 5,000 |
| BSP Life | 5,000 | 5,000 |
| NZHC | 15,000 | 15,000 |
| W & G Ltd | 7,500 | 5,000 |
| Digicel | 5,000 | 0 |
| MWH Global | 15,000 | 0 |
| | \$ 77,650 | \$ 55,000 |

8. SPONSORSHIP - IN KIND

The following sponsorships in kind were utilised during the year by the Company : -

| | 31 December 2015 \$FJ | 31 December 2014 \$FJ |
|-----------------------------|--------------------------|--------------------------|
| Aliz Pacific | 5,000 | 5,000 |
| Communications Fiji Limited | 10,000 | 10,000 |
| Dominion Finance Limited | 5,000 | 5,000 |
| Holiday Inn Suva | 0 | 650 |
| The Fiji Times Limited | 5,000 | 5,000 |
| Quality Prints Limited | 10,000 | 10,000 |
| Unwired Fiji Limited | 2,500 | 2,500 |
| Wyndham Vacation Resort | 0 | 2,500 |
| | \$ 37,500 | \$ 40,650 |

8 CAPITAL COMMITMENT at Balance Date - Nil.

9 CONTINGENT LIABILITIES at Balance Date - Nil.





THANK YOU 2015 PROGRAM SPONSORS!



Platinum Sponsors

New Zealand High Commission
Australia & New Zealand Banking Group
MWH Global



Gold Sponsors

British American Tobacco
Communications Fiji Limited
Quality Print Limited



Silver Sponsors

Bank South Pacific
BSP Life
Aliz pacific
Williams & Gosling Ltd
The Fiji Times
Digicel



Bronze Sponsors

Unwired Fiji
Bondwell

